

Legend

- Soil Sample Locations (SS)
- ◆ Monitoring Well Locations (MW)
- ▲ Soil Gas Sample Location (SG)

1844 Existing Structures

**Building 1842 / 1844
Galena Airport
September 2008
Locations and Results**

C:\Projects\GalenaDecember2008\ArcGIS\08_1842-1844-11x17fadj.mxd

Groundwater
(none)

Soil

Sample ID	Depth	Sample Date	Units	benzene	ethylbenzene	toluene	m & p-xylene	o-xylene	1,2,4-trimethylbenzene	1,3,5-trimethylbenzene	cis-1,2-dichloroethene	tetrachloroethene	trans-1,2-dichloroethene	trichloroethene	vinyl chloride
1700-MC94	13	Aug '07	mg/kg	7.08	64.4	72.4	242	58.1	145	42.9	<0.643	<0.643	<0.643	0.4	<0.643
1700-MC94	15	Aug '07	mg/kg	0.127	1.62	3.69	6.69	2.94	5.3	1.73	<0.602	<0.602	<0.602	<0.602	<0.602

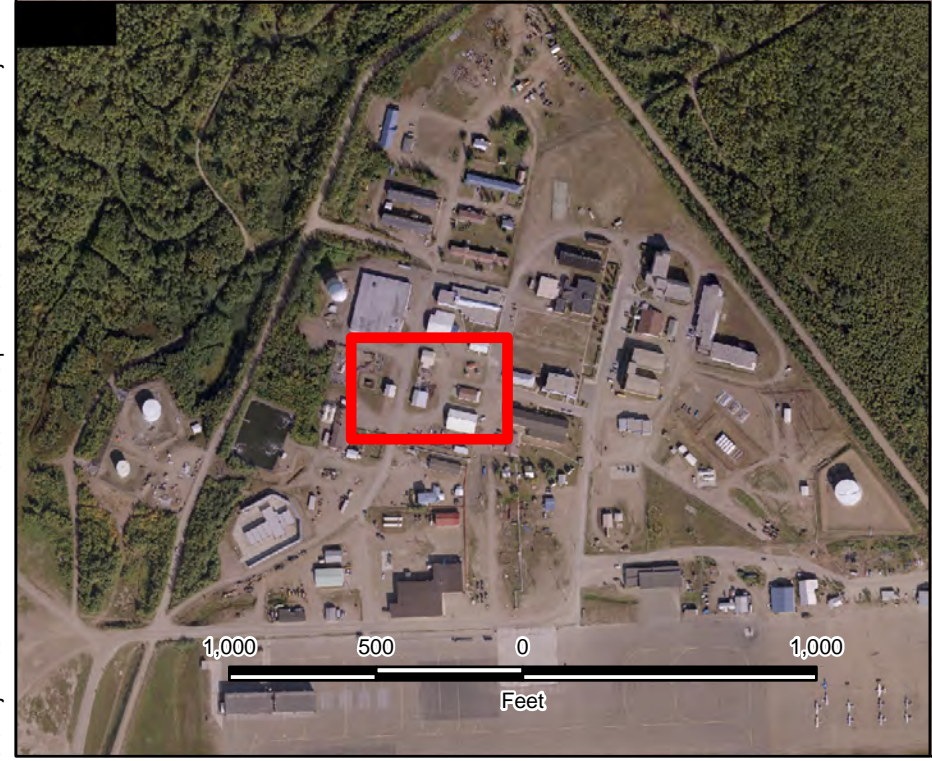
Soil Gas

Sample ID	Depth	Sample Date	Units	benzene	ethylbenzene	toluene	m & p-xylene	o-xylene	1,1,1-trichloroethane	1,1,2-trichloroethane	1,1-dichloroethane	1,1-dichloroethene	1,2-dichloroethane	bromomethane/chloroethane	carbon tetrachloride	chloroform	cis-1,2-dichloroethene	cis-1,3-dichloropropene	methylene chloride	tetrachloroethene	trans-1,2-dichloroethene	trichloroethene	trichlorofluoromethane	vinyl chloride	total TPH C4-C12	total TPH C11-C18
1842-SG347	5	Sept '08	PPMV	11.904	2.449	36.542	12.541	4.724	0.0015	<0.01	<0.02	<0.01	0.0659	<1	<0.005	0.0038	0.48	<0.01	<2	0.0031	0.1165	14.179	0.0045	<1	165	<7.1
1842-SG351	10	Sept '08	PPMV	<0.1	4.602	0.3126	0.4079	1.109	0.0018	<0.01	0.0267	5.664	<0.02	<1	<0.005	<0.005	400.37	<0.01	<2	<0.01	5.2572	0.1023	<0.005	2.15	326	0.55
1842-SG356	10	Sept '08	PPMV	<0.1	4.354	0.3084	0.3738	0.9558	0.0017	<0.01	0.0261	5.61	<0.02	<1	<0.005	<0.005	398.72	<0.01	0.9845	<0.01	5.267	0.101	<0.005	2.06	316	0.6
1842-SG358	10	Sept '08	PPMV	<0.1	6.046	2.0681	1.614	1.798	0.1088	<0.01	0.084	1.4535	<0.02	<1	<0.005	0.1476	84.012	<0.01	<2	0.0448	2.38	796.88	0.0126	<1	476	1.3
1842-SG378	10	Sept '08	PPMV	0.4411	0.6506	0.1201	0.0714	0.2675	<0.005	<0.01	0.0121	4.557	<0.02	<1	<0.005	<0.005	189.18	<0.01	<2	<0.01	3.572	1.6483	0.002	0.8782	89.5	0.7
1842-SG378	10	Sept '08	PPMV	0.0125	<0.1	<0.1	<0.2	0.0534	0.0074	<0.01	0.0126	0.0772	<0.02	<1	<0.005	0.0018	12.233	<0.01	<2	<0.01	0.5336	18.535	0.023	<1	9.31	<7.1
1842-SG382	10	Sept '08	PPMV	<0.1	0.457	0.0541	0.0944	0.2027	0.133	0.0805	<0.02	0.099	<0.02	<1	0.2351	0.2111	3.5851	<0.01	<2	0.1428	0.3148	5287.8	0.0035	<1	1642	<7.1
1844-SG343	12	Sept '08	PPMV	<0.1	<0.1	0.2249	0.0371	0.0988	0.008	<0.01	<0.02	0.0139	<0.02	<1	<0.005	0.0075	2.399	<0.01	<2	<0.01	1.092	26.815	0.0245	<1	10.6	<7.1
1844-SG344	10	Sept '08	PPMV	<0.1	<0.1	0.0431	<0.2	0.0878	0.0157	<0.01	<0.02	<0.01	<0.02	<1	<0.005	0.0109	8.1608	<0.01	<2	<0.01	1.5343	42.774	0.0156	<1	16.2	<7.1

Field Data

Sample ID	Depth	Sample Date	carbon dioxide (percent)	oxygen (percent)	photoionization detector (ppmV)	TVH hexane equivalents (ppmV)	TVH hexane equivalents w/ 3:1 diluter (ppmV)
1842-SG347	5	Sept '08	3	17.7	77	65	
1842-SG347	10	Sept '08	11.2	9.4	46.1	0	240
1842-SG348	5	Sept '08	8.6	11.6	19.9	0	120
1842-SG348	10	Sept '08	2.7	19	31.5	10	
1842-SG349	10	Sept '08	18.8	4	13.1	0	0
1842-SG350	10	Sept '08	16	4	32	0	0
1842-SG351	10	Sept '08	15.4	2	597	0	0
1842-SG352	10	Sept '08	18.4	1.6	68	0	0
1842-SG353	9	Sept '08	13.4	6.2	264	0	0
1842-SG354	10	Sept '08	14	3.3	201	0	0
1842-SG355	5	Sept '08	0.6	20.7	26.8	45	
1842-SG355	10	Sept '08	14.6	4.5	990	55	720
1842-SG356	5	Sept '08	10.6	8.9	585	50	840
1842-SG356	10	Sept '08	17.4	1.7	3800	15	880
1842-SG357	10	Sept '08	0.2	20.8	3.1	250	
1842-SG358	10	Sept '08	18.6	1.4	4600	0	180
1842-SG376	10	Sept '08	16.7	3.5	275	0	0
1842-SG377	10	Sept '08	14.5	6.8	201	0	50
1842-SG378	10	Sept '08	15.6	5	79	5	290
1842-SG379	10	Sept '08	9.6	13	565	0	10
1842-SG380	10	Sept '08	13.3	11.1	130	0	270
1842-SG381	10	Sept '08	8.8	11.1	<9999	0	0
1842-SG382	10	Sept '08	11.2	9.8	<9999	0	0
1842-SG383	10	Sept '08	10.1	11.8	<9999	0	50
1842-SG384	5	Sept '08	2.8	18	1.5	30	
1842-SG384	10	Sept '08	19	24	7.5	0	0
1842-SG385	5	Sept '08	3.4	16.9	1.8	0	
1842-SG385	10	Sept '08	18.4	1.5	23.5	0	25
1842-SG386	5	Sept '08	3.2	16.5	5.6	20	70
1842-SG386	10	Sept '08	13.2	4.7	35	0	0
1842-SG387	5	Sept '08	2.8	17	6	0	0
1842-SG387	10	Sept '08	1.8	18.4	8.8	15	5
1842-SG388	5	Sept '08	2.6	17.9	78.5	30	60
1842-SG388	10	Sept '08	15.4	2.1	3500	0	10
1842-SG389	5	Sept '08	2.6	17.8	77.2	30	55
1842-SG390	5	Sept '08	2.6	18.1	25	0	10
1842-SG390	10	Sept '08	16	1.7	53	0	0
1842-SG391	5	Sept '08	2.8	17.3	22.9	20	45
1842-SG391	10	Sept '08	15.8	2.1	40	0	0
1842-SG392	5	Sept '08	2.8	17.1	12.7	55	90
1842-SG392	10	Sept '08	15.8	1.6	55.1	0	50
1842-SG393	10	Sept '08	16.6	1.9	195	0	0
1842-SG394	5	Sept '08	2.4	17.9	19.5	20	
1842-SG394	10	Sept '08	17.4	1.7	158	0	240
1842-SG395	10	Sept '08	0.1	20.5	2.6	10	
1842-SG396	5	Sept '08	3	17.4	16.5	0	0
1842-SG396	10	Sept '08	17.4	1.8	166	0	0
1842-SG397	5	Sept '08	2.6	17.9	15.8	0	0
1842-SG397	10	Sept '08	1.2	20	20.4	10	
1842-SG398	10	Sept '08	14	5.8	169	0	180
1842-SG399	5	Sept '08	3	17.5	7.9	160	190
1842-SG399	10	Sept '08	19.6	1.6	87.7	0	150
1842-SG400	5	Sept '08	2.4	18.4	10.3	0	
1842-SG400	10	Sept '08	15.8	4	190	0	0
1842-SG401	5	Sept '08	2.6	18.3	12.2	0	
1842-SG401	10	Sept '08	19.2	21.7	142	0	0
1844-SG343	5	Sept '08	2.8	18.7	4.6	30	
1844-SG343	12	Sept '08	18.8	6	85.9	0	
1844-SG344	5	Sept '08	2.7	18	16	30	
1844-SG344	10	Sept '08	11.4	14	165	0	260
1844-SG345	5	Sept '08	3	18.7	13.9	70	
1844-SG345	10	Sept '08	7.4	16.8	139	15	
1844-SG346	5	Sept '08	3.2	18.2	5	65	
1844-SG346	10	Sept '08	17	9.6	14.5	0	

Building 1842 / 1844
Galena Airport
September 2008 Results



**Building 1842 / 1844
Galena Airport
September 2008
Locations and Results**

Legend

- Soil Sample Locations (SS)
- ◆ Monitoring Well Locations (MW)
- ▲ Soil Gas Sample Location (SG)
- Estimated Extent of TCE in Soil Gas
- 1844 Existing Structures

C:\Projects\GalenaDecember2008\ArcGIS\plume 08 1842-1844-11x17fa0j.mxd